

**YMCA OF GREATER BOSTON
ANNUAL REPORT 2010**

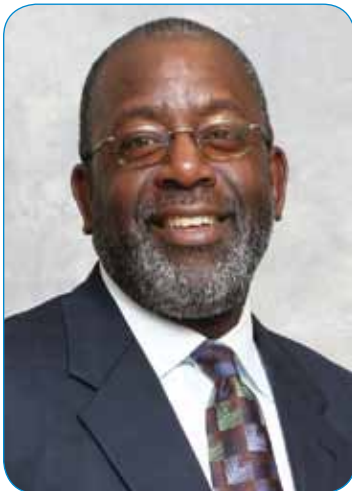


DEAR FRIEND



Working side by side with people just like you, the YMCA of Greater Boston ensures that everyone, regardless of race, age, income or ability, has the opportunity to live life to the fullest. With 160 years of experience, we use our knowledge to create stronger, more inclusive communities, provide support for individuals and families, and promote lasting, positive change.

In 2010, we celebrated the re-opening of the Hyde Park Y after closing it to fully renovate and expand this centennial building. With lead gifts from State Street Corporation, Eileen and Jack Connors, and the McGrath Family, the Y invested over \$8 million to make the building accessible and ready to meet the high demand for youth development services including after school programs and teen activities for this neighborhood.



Our commitment to healthy living resulted in over 65,000 members being served through our 13 community Ys. Partnerships with hospitals and medical experts enabled the Y to help individuals battling diabetes, asthma, obesity and cancer with medically-based wellness programs.

Keeping teens safe and engaged is a priority for the Y. Last summer, we employed 650 teens and for many it was their first paying jobs. For the fourth summer in a row, we made our Ys free for all teens providing extended hours, special programs, leadership training, college preparation classes and recreational activities as well as a host of other safe, fun activities to over 7,500 teens.

Inside are just a few stories of how your support has changed the life of a Y member. We are grateful for your commitment to our mission and our work; together we are strengthening the foundations of community.

A handwritten signature in black ink, appearing to read "John G. Conley".

John G. Conley
Chairman of the Board

A handwritten signature in black ink, appearing to read "Kevin Washington".

Kevin Washington
President & CEO



YOUTH DEVELOPMENT

Nurturing the potential of every child and teen.

Everyone deserves the chance to discover who they are and what they can achieve. At the YMCA of Greater Boston, we want youth and teens to have the opportunity to learn, grow and thrive. Time at the Y spent playing, learning and socializing helps kids of all ages to grow character values, skills and relationships that lead to positive behavior, better health and educational achievement.

SO MANY SMILES

The YMCA of Greater Boston served more than 35,000 children from infants to teens in all Y programs in 2010.

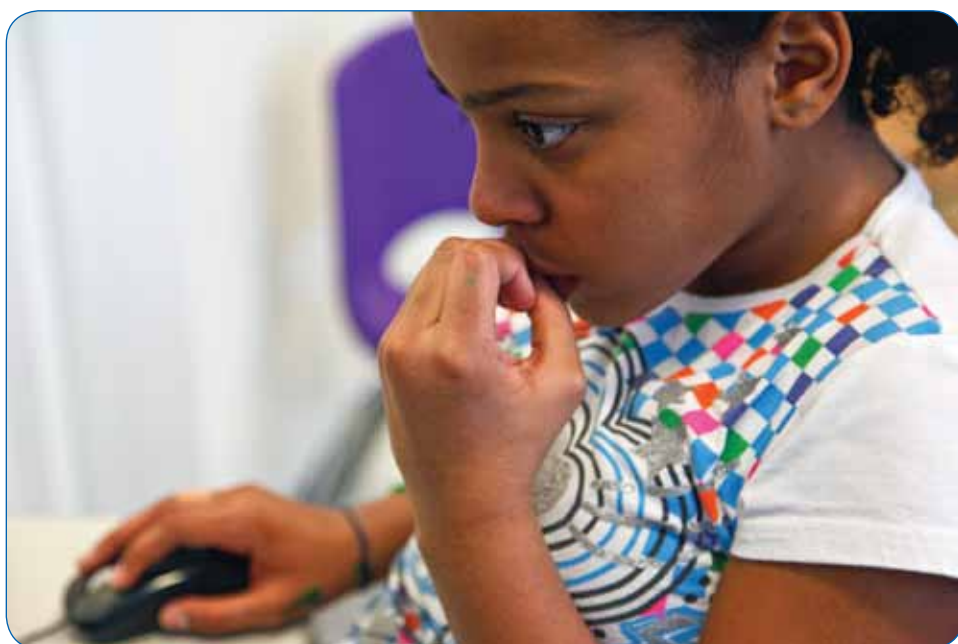
“When my mother and I moved to Boston in 1994, we were homeless for about two to three years. While in a YMCA after school program, the director helped me develop my social skills and to improve the effort I put forth in classes. Because of people at the YMCA, I graduated from Bentley University last May with top honors and was the first of my family to finish college.”

SUCCESSFUL Y AFTER SCHOOL STUDENT



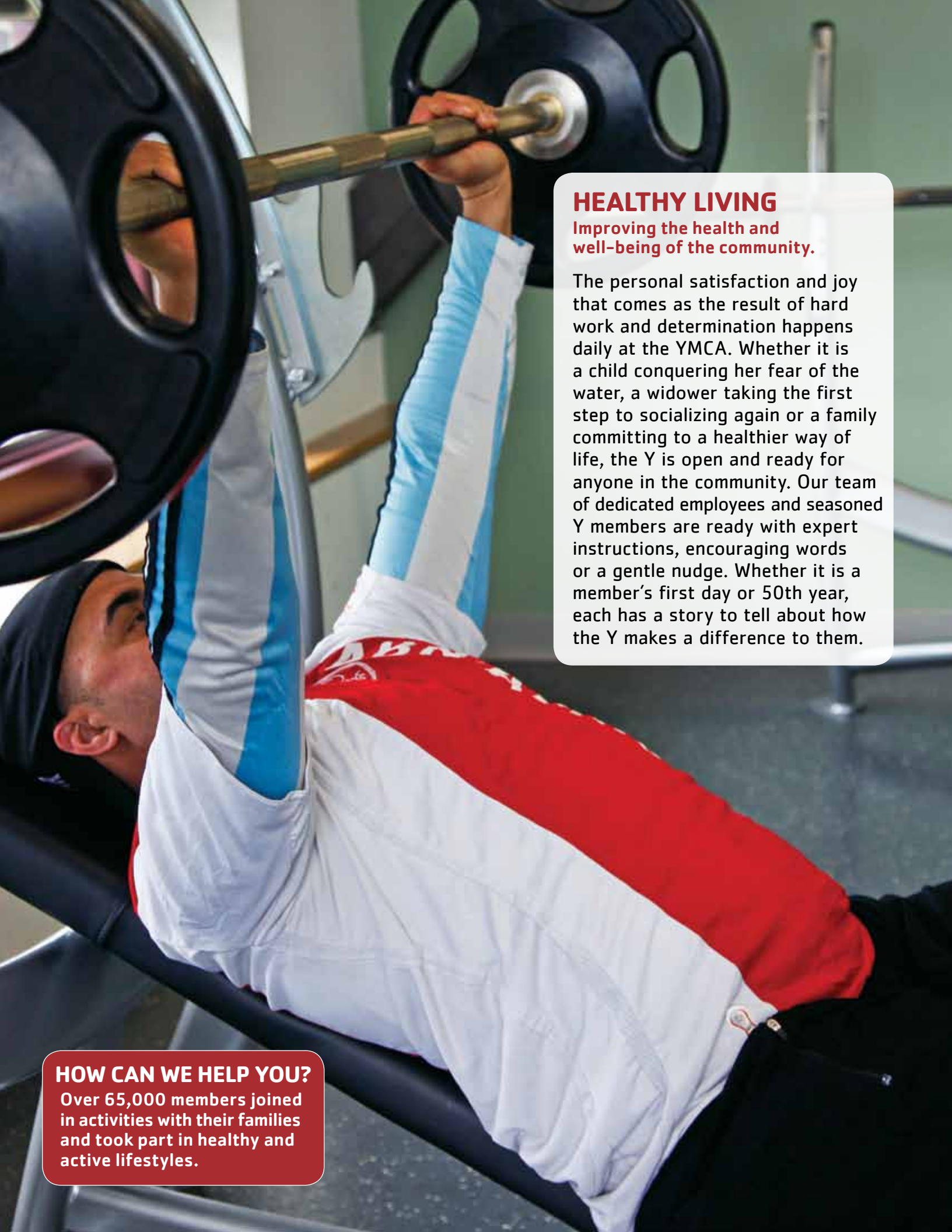
“When I first signed up my son Chris at the Burbank YMCA, our goal was to strengthen his confidence and be active in sports teams. His confidence level soared from being shy and very apprehensive to being super confident in his social skills.”

ENTHUSIASTIC Y YOUTH SPORTS PARENT



“The numerous programs and classes offered by the YMCA have greatly assisted my boys in developing into the well-adjusted tots they are today. How fortunate our family is to have such an excellent and affordable institution just down the street.”

HAPPY YMCA EARLY EDUCATION PARENT



HEALTHY LIVING

Improving the health and well-being of the community.

The personal satisfaction and joy that comes as the result of hard work and determination happens daily at the YMCA. Whether it is a child conquering her fear of the water, a widower taking the first step to socializing again or a family committing to a healthier way of life, the Y is open and ready for anyone in the community. Our team of dedicated employees and seasoned Y members are ready with expert instructions, encouraging words or a gentle nudge. Whether it is a member's first day or 50th year, each has a story to tell about how the Y makes a difference to them.

HOW CAN WE HELP YOU?

Over 65,000 members joined in activities with their families and took part in healthy and active lifestyles.

“My message is simply this: moving really helps lessen the pain and stiffness of arthritis. As I become more consistent with my exercise, I continue to receive positive support from the YMCA. Thank you all for helping to keep me motivated and healthy!”

PAIN-FREE YMCA ARTHRITIS PATIENT

“When I first started exercising I could barely do 5 minutes at 2.5 mph on the treadmill, but I could walk in the pool for 20 minutes. I joined the water aerobics class and lost my first 100 pounds in 8 months!”

HEALTHIER Y MEMBER



“The Y has fostered a healthy lifestyle along with some very dear friendships. As I saw my body begin to grow stronger and handle a progressively stronger workout, I also realized that I looked forward to seeing the same faces at the Y every day, including Y employees and fellow members. The YMCA has become an integral part of my healthy physical, emotional and social life.”

YMCA COMMUNITY BUILDER





SOCIAL RESPONSIBILITY

Giving back and providing support to our neighbors.

The YMCA of Greater Boston is responding to today's most critical social needs such as unemployment, education and health care through our programs, people and staff. In doing so the Y is promoting the care and respect of all of our community members. Whether we are providing job skills training through YMCA Training, Inc., teaching English classes at the International Learning Center, or collaborating with health care institutions to prevent chronic disease such as our partnership with Boston Medical Center to combat childhood obesity in Boston youth, we are empowering individuals to become healthy, confident, connected and secure.

WE CAN'T DO IT ALONE

The YMCA partners with more than 250 of Greater Boston's leading community-based organizations who work side by side with us to deliver our mission every day.



"LIVESTRONG has empowered me as a survivor of cancer. Some days I had to push myself to get to the gym, but I always felt energized when I left. I visually saw the difference, as others did, in my body structure, energy and overall well-being."

YMCA LIVESTRONG PARTICIPANT



"Thank you from this family of seven to the Constitution Inn Y and Sandy Island Family Camp! I have done two tours of duty in the Middle East and when I get the time off and a chance to spend it with my family, that time is priceless. My children did crafts, played outside, and had swim lessons while my husband and I took advantage of an array of activities. It was an amazing experience."

AIR FORCE STAFF SERGEANT & Y CAMPER



"Shortly after joining the YMCA my daughter was diagnosed with Guillain-Barre Syndrome and spent a good part of that year in hospitals and rehab. The Y is the only pool in our vicinity to have a handicapped access pool. We came on a daily basis and she worked very hard on her physical therapy program. I cannot say enough how much it meant after months of her hard work when she graduated to a walker. On that day, your staff gave her a standing ovation!"

GRATEFUL MOTHER

LEADERSHIP

2010 GENERAL BOARD OF DIRECTORS

John G. Conley, Chairman,
Gilliam Capital

Patricia S. Bellinger, Vice-Chairman,
Harvard Business School

Eileen M. Connors, Vice-Chairman,
Community Volunteer

Brian H. Kavogian, Vice-Chairman,
Charles River Realty Investors

Jeff Conway, Treasurer,
State Street Bank & Trust Co.

Mark S. Ain, Kronos Incorporated

Hope A. Aldrich, Eastern Insurance Group LLC

Richard H. Aldrich, Longwood Founders Fund

Brant Binder, SRU Biosystems

Roger Brinner, The Parthenon Group

Paul A. Burmeister, Tatum

Elizabeth B. Burnett, Mintz, Levin, Cohn, Ferris,
Glovsky & Popeo PC

Frederick H. Chicos, Christie & Associates, LLC

Daniel F. Conley, Suffolk County District Attorney

Michael Contompasis, City of Boston

Joseph E. Corcoran, Corcoran Jennison Companies, Inc.

Carlos CUBIA, Blue Cross Blue Shield of Massachusetts

C. Michael Daley, Community Volunteer

John P. Fowler, HFF

David G. Fubini, McKinsey & Company, Inc.

John W. French, Neshamkin French Architects

Carol Fulp, John Hancock Financial Services

Rev. Gregory G. Groover, The Historic Charles
Street AME Church

Clarence J. Harwood, Harwood Associates

Cornelius K. Hurley, Boston University Law School

William I. Huyett, McKinsey & Company, Inc.

Robert E. Kenney, Kenney Development Company

Teresa K. Koster, Gallagher Koster

John E. Larsen, New Balance Athletic Shoe, Inc.

Stacey J. Lucchino, Community Volunteer

William F. Macauley, Craig and Macauley
Professional Corp.

Gary R. Magnuson, Citizens Bank

William B. Marsh, Community Volunteer

Charlayne Murrell-Smith, Boston Children's Museum

James P. Palermo, The Bank of New York
Mellon Corporation

Charles R. Parrott, Community Volunteer

Gregory L. Petrini, Petrini Corporation

Matthew F. Power, Lexington Insurance Company

Paul J. Scapicchio, ML Strategies, LLC

Nancy Stuart, Concert Pharmaceuticals, Inc.

Robert E. Travaglini, Travaglini Eisenberg Kiley LLC

Alan W. Tuck, The Bridgespan Group

Ronald D. Ulich, Liberty Mutual Group

Frederick A. Wang, Community Volunteer

Richard C. Waters, Mitsubishi Electric
Research Laboratories

Faith S. Weiner, The Stop & Shop Supermarket Company

YMCA OF GREATER BOSTON

2010 BOARD OF OVERSEERS

Francis X. Bellotti, Mintz, Levin, Cohn, Ferris,
Glovsky, and Popeo PC

Joan Bernard-Cutler, Community Volunteer †

Michael W. Bonney, Cubist Pharmaceuticals

Wayne A. Budd, Goodwin Proctor

Jay M. Cashman, Jay Cashman, Inc.

Charles I. Clough, Jr., Clough Capital Partners, LP

Richard F. Connolly, Morgan Stanley & Co.

Jack Connors, Jr., Hill, Holliday, Connors, Cosmopolos, Inc.

Gene DeFilippo, Boston College

John F. Donohue, Arbella Insurance Group

Francis A. Doyle, Connell Limited Partnership

Anne Finucane, Bank of America

Scott Adams Fisher, Community Volunteer

Geri Gerson, Community Volunteer

Diana Todaro Getman, Portsmouth Sign Company

Paula A. Johnson, MD, Brigham & Women's Hospital

Evelyn C. Kaupp, Deloitte & Touche

Alan Lewis, Grand Circle Corporation

Ronald E. Logue, State Street Corporation

Stanley J. Lukowski, Community Volunteer

Peter S. Lynch, Fidelity Management & Research Company

Eugene Lyne, Community Volunteer †

Martin D. Madaus, Millipore Corporation

Ralph C. Martin II, Northeastern University

Thomas Martin, Cramer Productions

Thomas J. May, NSTAR

John F. McNamara, The Japan Fund

Robert Mudge, Verizon

Joseph J. O'Donnell, Boston Culinary Group, Inc.

Jacqueline O'Neill, Harvard University

Patrick J. Purcell, The Boston Herald

Jerry Rappaport, Jr., New Boston Fund, Inc.

Dusty S. Rhodes, Conventures, Inc.

Donald E. Rodman, Rodman Ford Sales, Inc.

Reverend Nicholas A. Sannella, Immaculate
Conception Parish

Thomas F. Shields Sr., Shields Health Care Group

Jerry M. Socol, The Socol Group

Thomas T. Soviero, Fidelity Leveraged Company

Neil St. John Raymond, Raymond Property Company, LLC

Heywood Wilansky, Retail Ventures, Inc.

† Deceased

2010 HONORARY BOARD MEMBERS

Robert D. Brace	Thomas J. Mahoney
Raymond Desautels	William B. Marsh
Walter L. Downing	William F. Meagher, Jr.
Richard R. Driscoll	John P. Meehan
Edward R. Haddad	Robert B. Pitcher
E. Leonard Kane	John C. Scully
John E. Larsen	Richard A. Simons
Eugene Lyne †	† Deceased

2010 YMCA BOARD LEADERSHIP

YMCA ACHIEVERS

Renee Laverne Harper
Co-Chair and General Board Representative

Philip Hillman
Co-Chair and General Board Representative

BURBANK YMCA

George Marinakas
Chair and General Board Representative

Thomas B. O'Rourke
Chair and General Board Representative

YMCA CAMPING SERVICES

Diana Todaro Getman
Chair and General Board Representative

CHARLES RIVER YMCA

Dalton Murphy
Chair

Adrienne Smith
General Board Representative

DORCHESTER YMCA

Gregory Wilmot
Chair and General Board Representative

EAST BOSTON YMCA

Derek Brodin
Chair

Steve Roussel
General Board Representative

EDUCATION & TRAINING YMCA

Vivian Leonard
Chair and General Board Representative

HUNTINGTON AVENUE YMCA

Mitchell B. Feldman
Chair

Lindsey Noecker
General Board Representative

HYDE PARK YMCA

Andrew Sideman
Chair and General Board Representative

NORTH SUBURBAN YMCA

David Damassa
Chair and General Board Representative

OAK SQUARE YMCA

William D. Luzier
Chair and General Board Representative

ROXBURY YMCA

Candace Sealy
Chair

Laura Dickerson
General Board Representative

WALTHAM YMCA

Kevin Hart
Co-Chair and General Board Representative

Kenneth Marcou
Co-Chair and General Board Representative

Laura J. Goldin
Chair and General Board Representative

WANG YMCA

William Moy
Chair and General Board Representative

WEST ROXBURY YMCA

James W. Hennigan III
Chair and General Board Representative

YMCA MANAGEMENT TEAM

Kevin Washington
President & CEO

Ed Dahlstedt
Vice President – Facilities

Mark Dengler
Senior Vice President – Operations

Paul E. Mantell
Vice President – Human Resources

Natalie Norton
Senior Vice President – Operations

Kelley Rice
Senior Vice President – Development & Communications

Harold Sparrow
Senior Vice President – Operations

Ann C. Tikkanen
Senior Vice President – Chief Financial Officer

FINANCIALS

CONSOLIDATED STATEMENT OF ACTIVITIES

Year ended December 31, 2010

	Unrestricted	Temporarily Restricted	Permanently Restricted	Total 2010
SUPPORT:				
Sustaining contributions	\$ 1,713,175	-	-	1,713,175
United Way	324,111	286,000	-	610,111
Other contributions and special events	1,391,405	786,675	-	2,178,080
Total support	3,428,691	1,072,675	-	4,501,366
REVENUE:				
Program fees, including camping	21,755,493	-	-	21,755,493
Residence fees and facility rentals	1,393,243	-	-	1,393,243
Membership dues and joining fees	16,027,207	-	-	16,027,207
Contract and grant revenues	10,614,114	-	-	10,614,114
Other revenues	1,607,871	-	-	1,607,871
Investment income used in operations, net	611,925	-	-	611,925
Net assets released from restriction	835,698	(835,698)	-	-
Total revenue	52,845,551	(835,698)	-	52,009,853
Total support and revenue	56,274,242	236,977	-	56,511,219
EXPENSES:				
Salaries, wages, and other employment costs	33,028,717	-	-	33,028,717
Contract and professional services	1,238,364	-	-	1,238,364
Supplies, telephone, and postage	3,446,877	-	-	3,446,877
Occupancy, transportation, and related costs	11,334,575	-	-	11,334,575
Depreciation and amortization	3,573,311	-	-	3,573,311
Other costs and expenses	4,308,777	-	-	4,308,777
Total expenses	56,930,621	-	-	56,930,621
Operating income (loss)	(656,379)	236,977	-	(419,402)
OTHER REVENUES (EXPENSES) AND CHANGES:				
Contributions for long-term investment	-	-	21,933	21,933
Capital contributions	-	826,168	-	826,168
Net assets released - capital	1,770,802	(1,770,802)	-	-
Reinvested net gains and income on investments	116,863	833,714	-	950,577
Change in fair value on interest rate swap agreement	(404,780)	-	-	(404,780)
Write off of costs on terminated project	(629,675)	-	-	(629,675)
Total other revenues (expenses)	853,210	(110,920)	21,933	764,223
Total change in net assets	196,831	126,057	21,933	344,821
Net assets, beginning of year	28,596,578	16,670,718	5,332,138	50,599,434
Net assets, end of year	\$ 28,793,409	16,796,775	5,354,071	50,944,255

CONSOLIDATED STATEMENTS OF FINANCIAL POSITION

December 31, 2010 and 2009

	2010	2009
ASSETS		
Cash and cash equivalents	\$ 12,231,844	12,453,950
Accounts receivable, net	1,790,602	1,274,773
Contributions receivable, net	3,145,916	6,097,491
Investments	13,875,900	11,976,814
Financing proceeds held by trustee	448	1,513,414
Property, plant, and equipment, net of accumulated depreciation	66,787,928	61,492,377
Other assets	1,045,372	1,503,852
Total assets	\$ 98,878,010	96,312,671

LIABILITIES AND NET ASSETS

Accounts payable and accrued expenses	\$ 4,232,102	4,005,594
Deferred revenue	1,069,881	938,603
Asset retirement obligation	5,239,965	5,176,763
Interest rate swap obligation	1,577,057	1,172,277
Bonds payable	33,645,000	34,420,000
Note payable	2,169,750	-
Total liabilities	47,933,755	45,713,237

Net assets:

Unrestricted	28,793,409	28,596,578
Temporarily restricted	16,796,775	16,670,718
Permanently restricted	5,354,071	5,332,138
Total net assets	50,944,255	50,599,434

Total liabilities and net assets	\$ 98,878,010	96,312,671
---	----------------------	-------------------

MISSION STATEMENT

The YMCA of Greater Boston is dedicated to improving the health of mind, body and spirit of individuals and families in our communities. We welcome men and women, boys and girls of all incomes, faiths and cultures.

2010 DONOR HONOR ROLL

STRONG PAST, STRONG FUTURE, STRONG COMMUNITIES CAMPAIGN

Through the generosity of the donors of the Strong Past, Strong Future, Strong Communities Campaign, the YMCA of Greater Boston renovated and expanded the historic Hyde Park YMCA in 2010 and is creating a new vision for Boston's West Roxbury neighborhood through the development of an expanded YMCA.

\$1,000,000 AND ABOVE

Eileen and Jack Connors
State Street Corporation

\$500,000 - \$999,999

Anonymous
The McGrath Family
Frederick A. Wang/The Wang Foundation

\$250,000 - \$499,000

Joseph and Rosemarie Corcoran
Deutsche Bank Americas Foundation

\$100,000 - \$249,000

Mark S. and Carolyn C. Ain
The George I. Alden Trust
American International Group Inc.
Arbella Insurance Group
Jay and Christy Cashman
Charles and Gloria Clough
The Cooperative Bank
John F. Donohue
Eastern Bank Charitable Foundation
First Congregational Church of Hyde Park
John Fowler
William and Lauren Huyett
Brian and Susan Kavooagian
Liberty Mutual Group
Stacey and Larry Lucchino
Stanley J. Lukowski
Amelia Peabody Charitable Fund
Savings Bank Life Insurance

\$50,000 - \$99,000

Brookline Bank
William Golden and Gwynne Morgan
C.J. Harwood
Dr. Edward Zarrow and Carey Bertrand
Martin and Susan Madaus
NSTAR
James and Maureen Palermo
Charles and Hilda Parrott
The Anne and Henry Zarrow Foundation
Edward E. Zuker / Chestnut Hill Realty

This donor list recognizes gifts and pledges as of December 31, 2010. Every effort has been made to ensure the accuracy of our donor listings. If we have inadvertently made an error please contact Sarah Fitzgerald at 617-927-8273 to correct our records.

\$25,000 - \$49,999

Richard and Nichole Aldrich
Patricia S. Bellinger and Richard Balzer
Robert Benmosche
Frederick H. Chicos
John G. Conley
C. Michael Daley
John W. French and Linda Neshamkin
Lexington Insurance Company
William and Irene Marsh
Sean and Laura McLaughlin
Roche Bros. Supermarkets
Richard A. Simons
Richard and Patricia Waters

\$10,000 - \$24,999

Hope A. Aldrich and Vytas Simas
Alterra Reinsurance USA Inc.
AmWINS Group, Inc.
Aon Foundation
Arthur Blank & Company, Inc.
Boston Bruins Foundation
Paul A. Burmeister
Collaborative Consulting, LLC
Jeff and Shannan Conway
Copeland Family Foundation
David Donatelli
Thomas, Anne and Margaret Geraghty
Frederick and Shelly Gillis
James and Jude Hennigan
Cornelius K. Hurley
Marion Kelly and Mark Ober
Teresa K. Koster
John and Nancy Larsen
William and Sheila Macauley
McLarens Young International
Douglas Miller
Munich RE
New England Sports Enterprises, LLC
New Georgetowne LLC
Peoples Federal Savings Bank
Ryan Turner Specialty
Scott K. Smith
The Stuart Family
Towers Watson
Alan W. Tuck
Ronald Ulich
Waugh Family Foundation Inc.
Seth Waugh
William Gallagher Associates

\$5,000 - \$9,999

AEW Capital Management
Alan Gray, Inc.
Alliant Insurance Services, Inc.
Axis Specialty Limited
Carey & Company
Carlton Fields
Michael Christian
Crawford & Company
Kenneth and Janice Cunningham
D'Amato & Lynch, LLP
Ronald R. and Holly Darzen
Scott Desano
Deutsche Bank Championship
Donovan Hatem LLP
Elizabeth and Robert Doris-Gustin
FARA Risk Control Services
GAB Robins North America, Inc.
T.J. Geraghty Trust B
Guy Carpenter
Michael G. Hamrock
Hyde Park Savings Bank
Irwin Siegel Agency, Inc.
J.S. Held, Incorporated
James Devaney Fuel Company
Lepore Protective Services
Lewis Brisbois Bisgaard & Smith LLP
Lockton Management, LLC
Madsen Kneppers and Associates, Inc.
Sally Muspratt
NSM Insurance Group
Partner Reinsurance
Gregory and Mary Petrini
Matthew F. Power
The Redwoods Group Foundation
Regional Reporting, Inc.
Risk Strategies Company
Paul and Kathleen Scapicchio
Helen J. Sears
Sun Ray Cleaners
The Tobin Committee
John M. Tobin, Jr.
Trestle Realty Trust
Weinberg, Wheeler, Hudgins,
Gunn & Dial, LLP
West Roxbury Animal Hospital
Michael and Julie Woodall and Family
York Risk Services Group, Inc.

DESIGNATED GIFTS AND GRANTS

The YMCA is able to provide high quality programs and services because of generous contributions from corporations, foundations and other important community partners. We are pleased to recognize the following donors who supported our programs in 2010, including those who made in-kind donations.

\$500,000 AND ABOVE

United Way of Mass Bay and
Merrimack Valley

\$100,000 - \$499,999

The Boston Foundation
Hobbs Brook Management
Stop & Shop/Giant Family Foundation

\$50,000 - \$99,999

Charles Hayden Foundation
New Balance Foundation
State Street Foundation, Inc.
Tufts Health Plan
YMCA of the USA

\$25,000 - \$49,999

AGM Summer Fund
Black Ministerial Alliance of
Greater Boston
Chinatown Trust Fund Committee
IBM
JCPenney Afterschool Alliance
Liberty Mutual Foundation
Procter & Gamble Co.
Tufts Medical Center
The Yawkey Foundations

\$10,000 - \$24,999

Anonymous
Boston After School & Beyond
Estate of Eugene Lyne
Hewlett Packard Company
Stephen A. Gordon
Massport
Partners HealthCare System, Inc.
Roxbury Trust Fund Committee Trust
Mr. and Mrs. David Wong- The Empire
Garden Restaurant
The Wong Family- Kowloon Restaurant

\$5,000 - \$9,999

Anonymous
Boston Police Foundation
Family Dentistry
John Hancock Financial Services
Massachusetts Environmental Trust
Share Our Strength
The TJX Foundation

2010 REACH OUT CAMPAIGN

In 2010, the YMCA of Greater Boston distributed more than \$2 million in financial scholarships to children, families and adults in need through our annual Reach Out Campaign. Thank you to the following donors who supported the Reach Out Campaign in 2010.

PRESIDENT'S ROUND TABLE CABINET \$10,000 AND ABOVE

AGM Summer Fund
Mark S. and Carolyn C. Ain
Richard and Nichole Aldrich
Anonymous
Family of Julian Anthony
Bank of America
The Bank of New York Mellon Corporation
Brant Binder
The Caswell Foundation
Children's Hospital Boston
Citizens Bank Foundation
Jack and Eileen Connors
Cummings Foundation, Inc.
The Family to Family Project
Hobbs Brook Management
William and Lauren Huyett
Stacey and Larry Lucchino

William and Sheila Macauley
Massport
Holly McGrath and David Bruce
New Balance Foundation
The Kelly Packowski MS Foundation
Susan F. Schiro and Peter J. Manus
State Street Foundation, Inc.
Tufts - New England Medical Center

PRESIDENT'S ROUND TABLE COUNCIL \$5,000 - \$9,999

Anonymous
Arbella Insurance Group
Charitable Foundation
Patricia S. Bellinger and Richard Balzer
Nelson and Rita Burbank
Frederick H. Chicos
CHNA 15 Coordinator
John G. Conley
Joseph and Rosemarie Corcoran
Dedham Institution For Savings
Eastern Bank Charitable Foundation
Eastern Insurance Group, LLC.
Favorite Foods
The Foundation to be Named Later
John Fowler
Richard D. Goldberg
William Golden and Gwynne Morgan

Harvard Pilgrim Health Care
The Elliot & Marjorie Hillback Fund
Bernie and Lorraine Horn
Ipswitch, Inc.
Evelyn C. Kaupp
Brian and Susan Kavogian
Kensington Investment Co., Inc.
Teresa K. Koster
Larz Anderson Auto Museum Car Show
Lyndon SACC & Grant
Needham Bank
Northeastern University
Charles and Hilda Parrott
Paul M. Wagner, Jr. Rev. Trust
Pfizer
PricewaterhouseCoopers LLP
Roche Bros. Supermarkets
Shuttle Worth Fund
Thomas and Carlotta Soviero
Sterling Suffolk Racecourse
Matthew J. and Gilda F.
Strazzula Foundation
The Stuart Family
Nicholas Tranquillo
Ronald and Victoria Ulich
W.B. Mason
Wakefield - Reading Y Service Club
Frederick A. Wang/The Wang Foundation
Richard and Patricia Waters
Gerdy Weiss
Stephen and Robbie Werth
Inez K. Woodberry Trust of 2000
Dr. Edward Zarrow and Carey Bertrand

PRESIDENT'S ROUND TABLE MEMBER \$2,500 - \$4,999

Anonymous
Boston Medical Center
Dana Brewer
Dana-Farber Inc.
Roger and Joyce Brinner
Brookfield Metal Co. Inc.
Kevin Burke
The Children's Chef, Inc.
Children's Hospital Waltham
Chubb & Son
City Line Cleaning
City of Woburn
City Shopper
Kenneth and Mary Crotty
David Joyce Charity Fund
Excel Orthopedic Specialists
John Faldetta
John and Mary Ann Ferrell
Thomas M. Finneran Charities Inc.
Fireman Charitable Foundation
Gee How Oak Tin Association of
New England
Diana Todaro Getman
Dr. Robert Guen
Robert J. Hickey
Houghton Chemical Company
Hyde Park Savings Bank
James and Maureen Jarosz
Richard Kashian
Kilmer PTO
Little Corner School House
Paul and Patricia Mantell
William and Irene Marsh
Jack and Susan McNamara
Needham Dental Associates
NSTAR
James and Maureen Palermo
Pepsi Bottling Group
Peter Sanborn Place
Puraqua Pool Service
Leonard and Jana Romano
Roslindale-West Roxbury Kiwanis Club
Paul and Kathleen Scapicchio
Shaevel & Krems
Adrienne Smith and Mark Gluesing
Harold and Rita Sparrow
Sun Life
Ann C. Tikkanen and Mark L. Sullivan
Training, Inc. National Association
The Honorable and Mrs. Robert E.
and Kelly Travaglini
Tufts School of Dental Medicine
Tufts University
Tufts University Department of
Community Relations
Mauricio Vasquez
Winchester Co-Operative Bank
Winn Development Co.
YMCA of the USA

BENEFACTOR \$1,000 - \$2,499

AccesSportAmerica
Adecco
Hope A. Aldrich and Vytas Simas
Alexandra Construction, Inc.
The Alper Foundation
American Food And Vending Corp
Amgen, Inc.
Anonymous
ArQule, Inc.
Thomas Baillie and Ann Domigan
David Barrett
Battlegreen Landscaping
The Baty Family Foundation Trust
Bay Path College
Paul Bechtner Foundation
Douglas and Michelle Bell
Elsa and John Bengel
Blue Cross Blue Shield of Massachusetts
Corporate Ink Publications
Henry T. Berry
Robert S. Bigelow
Bluestone Realty LLC
Boston College Community Fund Brighton
Boston Police Department
Boyle, Morrissey & Campo, P.C.
William Boynton
Bunk1.com
Karen Buttiglieri
Calloway Laboratories Inc.
Caritas St. Elizabeth's Medical Center
Carpenters Local Union #67
Casali Group, Inc.
Caturano & Company Foundation
Centralbank
Asael and Hilary Cespedes
Admiral Ming E. Chang
Peter and Peg Chatellier
Childs, Bertman, Tseckares, Inc.
Richard J. Chin
Citizens Bank
Citizens Energy Corporation
Charles and Gloria Clough
Kathryn Cochrane Murphy
Commonwealth Cooperative Bank
Tim Connors
The Honorable Rob Consalvo and
Michelle Keddy-Consalvo
The Cooperative Bank
Chesterfield Coppin
Theodore D. Cormier and Artie Leger
Country Club Heights
Susan Craighead
Josephine and Stephen Cuzzi
Edward and Kristel Dahlstedt
C. Michael Daley
David and Sarah Damassa
John and Gail Danielson

DentaQuest
Raymond and Marian Desautels
Robert J. Devaney, Jr.
Discover Ensemble, Inc.
Dr. Mark S. DiStefano and
Dr. Mary K. Wendel
William and Julie Doe
Michael and Jennifer Dooher
DoubleTree Hotel Corporation
Andy and Julie Doyle
Emerson College
Chuckwunulu Ezedi
Mitchell and Karen Feldman
James Felty and Judy Jackson
Fields Family Foundation
First Priority Credit Union
Scott and Laura Fisher
Kevin A. Foster and Nadia Chamblin
Julian Frank
Jack and Diane Fucci
The Gant Family Foundation
Karen T. Gately
Sally Glora
Stephen A. Gordon
Greater Boston Convention Bureau
Carolyn Greene
Lydia Greene
Richard C. Grinold
Reverend Gregory G. Groover
Steve and Barbara Grossman
H.T. Berry Company, Inc.
Edward and Barbara Haddad
Rachel L. Hall
Hanify & King
Janeen S. Hansen
Renee L. Harper
Kevin Hart
Harvard University
Philip Hillman
Kip Hollister
Hometown Auto Framingham, Inc.
The Brian J. Honan Charitable Fund
Honduran Soccer League
Honey Dew Donuts
Hudson Design Group LLC
Hudson Group North America LLC
Cornelius K. Hurley
J.M. Forbes & Co. LLP
Janet Jankowiak
John Leonard Employment Services
JP Morgan Chase & Co.
Marion Kelly and Mark Ober
Bennie Dinardo and Patrice Kish
Kiwans Club of Allston Brighton
Philip D. Kluge
Arthur and Kristina Lang
John and Nancy Larsen
Lee Kennedy Co., Inc.
Leiser Corporation

Lewin Windows, Inc.
Harriet Lewis
Local Motion
H.D. Lockhart Company
Robert and Teresa Loo
Thomas and Kysa Lovvoll
James and Crystal Lozano
Michael and Kathryn G. Lozano
The Luddy Family 2008 Charitable Lead
Annuity Trust
James Lyne
Alan MacKinnon
Renee Margossian
Massachusetts Behavioral
Health Partnership
Alexis Maybank
Linda McMillan
Brian R. McNeil Foundation
Michael Merullo
Roberta and Anthony Messina
Anne Meyerson
Millennium Partners
Millennium Printing Corporation
Maria Montuori
Sandra and Ron Morander
Fred and Susan Morhart
Edna Moy
Mt. Washington Charitable Foundation
Dalton Murphy
Mark Murphy
Robert W. Murray Charitable
Foundation DTD
Christopher Myers and Jo Ann Chang
Arthur H. Nelson
Charles P. Nelson, Jr.
New England Fitness Distributors
New England World Outreach
Newbury Comics
Debra O'Bryan
Jill and Andy Onderdonk
Park Lodge Corporation
Roger Parkinson
Walter Parkinson
Parkway Running Club
Pipefitters Local Union #537
Dana and Carolyn Pope
Printmaster
John T. Putnam
R.P. O'Connell, Inc.
RCN
Re/Max Leading Edge
Reading Rotary Club
Kelley Rice
Eugene F. Richey
Riverdale PTA
Rockland Trust Charitable Foundation
Ingrid Rodriguez
Margaret and John Roll
Rotary Club of Winchester
Roxbury Technology Corp.

Craig and Janine Schultze
Willie and Maxine Shellman
Elizabeth Shurland
The Cynthia L. and William E.
Simon, Jr. Foundation
Kyung Sin
Scott K. Smith
Sovereign Bank
Sprinkler Fitters Local 550
Cynthia Stivers
James Stoneman
Suffolk Downs
Suffolk University
Donna Sullivan
TD Bank
Anthony Teta
The Gables at Winchester
Richard and Cathy Thompson
Joanne Tinmouth
The Honorable Steven A. Tolman
Triumverate Environmental
Alan W. Tuck
Amy and Paul Turner
Turner Construction Company
Unica Cleaning Services Inc.
Thomas and Barbara Van Dyke
Ettie May Vaughn and Sean Ebanks
Venom Security
Veolia Energy North America
Vinciullo Charitable Foundation Trust
Wainwright Capital
Terry Walker
Kathleen and Daniel Walsh
Waltham Rotary Club
Watertown Savings Bank
Eugene Welch
West on Centre
Richard Wichmann
Elizabeth Williams
Winchester Savings Bank
WJJ Planning Construction
Dr. Bak Fun Wong
Nancy Yee Solomon
Young Heroes
Zdorovie Senior Services
Wendy and William Zinn
Robert Zombik

SPONSOR
\$500 - \$999

Absolute Home Comfort
Academy North, Inc.
Active Network
The Speedy & Honey Altman Memorial
Bernard and Nancy Anderson
William Anderson
Anonymous
Ross Arnold
AstraZeneca LP
Susan and Dennis Ausiello
Chris Austill
B-3 Gym Committee
Andrea Baez
Baillie & Company
Jeremy Baker
Kevin Barile
Patricia and George Barnwell
Glenn Barry
Bedford Charter Service
Sarah Begg
Donna Berman
Donald Bingham
Biogen Idec Foundation
Book Ends
Boston Partners/Mentoring, Inc.
Boston Police Patrolmen's Assoc.
Boston Scientific Corporation
Boston Storage Company
Boston Textile Company
Boston Youth Handball Association
Brighton Board of Trade
Cambridge Landscape Company, Inc.
Cambridge Masters Swim Club LLC
Cambridge Trust Company
Stephen and Lonni Campbell
Thomas Carrigg & Son, Inc.
Jennifer S. Cassells
Joseph N. Castro
Barbara Y. Catchings
Angela Chan
Billy Chin
Frank Chin
Chino World Management Inc.
Catarina and Jason Cipriani
City of Boston Credit Union
Philip and Sara Clarkson
Clear Channel Worldwide
Lisa Cloitre
Gerald D. Cohen
Dr. Cynthia H. Cole and George E. Cole
The Honorable Daniel F. Conley
Rebecca Cooper
Mark Cronin-Golomb
Jodi and David Crowley
Jennifer Culbert
D & S Snowplowing

Douglas Dahl
Elizabeth D'Arezzo
Ronald R. and Holly Darzen
Norman and Patty De Robertis
Stacy Dell'Orfano
Anthony Di Censo
Diversified Marine Construction
Doherty-Barile Funeral Home
John Donahue
William and Ruth Donovan
Eric Dorsey
Julie Dorsey
Jeff S. Dover and Tania J. Phillips
Linda Fairstein
Stephanie Fan
Faulkner Hospital
Ross and Roslyn Feldberg
Waldo L. Fielding
Francois R. Fils-Aime
John Fish
Fisher College
Tiffany Folkes
FUSN - Unitarian Universalist
Urban Ministries
Erik Garpestad
Gary's Liquors
Gentili & Rossini Associates
George Georges
Joseph H. & Pauline S. Gest Foundation
William and Linda Gibbons
Gillum Excavating
Laura J. Goldin
Paul and Gabriella Good
Tom Marden and Amy Goodman
Goon Shee Association
Gordon Brothers Group, LLC
Lawrence Govoni
Elizabeth Grace
Richard Grealish
MaryBeth Griffin
GZA GeoEnvironmental, Inc.
Betsey Halbert
Sandra E. Hall
Kenneth Hallberg
Harvard Vanguard Medical Association
Matthew and Maura Hodge
The Committee to Elect Kevin Honan
Howse Corporation
Russell Howse
Robert C. Hunsicker Foundation
Stephen C. Ives
J & M Brown Co.
J & S Carpet Co., Inc.
J. W. Construction, Inc.
JJ Hardwood Floors, Inc
Richard Johnson
Josiah Quincy School Association
Barbara Katzenberg
Jeffrey C. Keating

The Kerry Group , LLC
Families of the West Roxbury
YMCA Kids Stop
Kirkwood Direct
Peter Lavelle
Diane LeBlanc
Lee, Yee & Company P.C.
Kate L. Lemay
Lawrence H. Levine
Martha M. Lewis
Life Fitness
Emiley Lockhart
The Lisa P. Loeb Foundation
Linda Loney
Oscar Lopez
Louise Condon Realty Inc.
Kevin Luke
William and Joan Luzier
Monica Lynch
Sheila Lyne
David Mackie
Macrolease Corporation
Macy's Liquors
Gary and Sarah Magnuson
Marcus Partners
George Marinakis and Molly Smith
Dr. Nicholas Marinakis
Norm Marowitz
Brad Martin
Dr. Deborah Scott and Ralph C. Martin, II
Martini Insurance Agency, Inc.
Suzanne McElroy
James and Claire McGuire
Daniel McLaughlin
James P. McSherry
Patrick McVeigh
Merchants Leasing
MFS Investment Management
MGC Services
Judith Mitchell
Modell's Sporting Goods
Cassius Moore
Colleen Moore
Daniel H. Moore
Ann Moy
The Nelson Companies
New England Carpenters Labor
Management Program
New England Teamsters Federal
Credit Union
New York Life Foundation
Newton-Wellesley Hospital
Lindsey Noecker
Joseph and Sinikka Nogelo
Jack Novia
Mary T. O'Leary
Orthopedic Surgery, Inc.
Ann O'Shea
Oxford Realty Trust

P.W. Ryan Co. Inc.
Paolo Incampo DMD, PC
John and Jan Pararas
Parkway Y's Mens & Womens Club
Dave Peterson
Pool Environments, Inc.
Dave Powers Foundation, Inc.
Linda E. Queripel
Leonard Radochia
Realty Executives
Ritchie and Clair Reardon
Refrigeration Services of N.E.
Patricia Reitkopf
Xavier Rhinehart
Carol Rubin
Joanne Russo
Patricia Ryan
Ron and Julie Ryan
SaleStart
Salter Brothers Partnership
James Savage
Savings Bank Life Insurance
John Schachter & Associates Inc.
Adam R. Schepp
Thoreen Scopelliti
Scott/Griffin Architects
Nicholas Scotti
Edford Seeley
David Seldin
John and Marie Shack
Joel and Karen Shaw
Jane Simmons
Skyworks Solutions
Solidworks Corporation
Richard SooHoo Insurance Agency
Charles and Cathy Sorenson
South Shore YMCA
Spaulding Hospital Cambridge
Spaulding Rehabilitation Hospital
Stephen Christiansen Plumbing
Benjamin and Katherine Taylor
TH McCoy Restaurant Group LLC
Reed Thompson
John and Kimberly Tierney
Tiffany & Co.
Kim Tran
Charles Twigg
Ultimate Boot Camp
University of Memphis
Amy and Kevin Vendt
Wagon Wheel Nursery
Edward Walsh
Kevin and Sheila Washington
Curtis and Wilberanne Wells
David and Mary West
West Suburban YMCA
Westex
White Rock Church
James C. Wiess

Gregory Wilmot
Richard Wilson
Woburn Lions Breakfast Club
Kevin Wolf
James and Rosamond Wong
Jeffrey Wong
Anna L. Young
Ellen M. Zane

PATRON **\$250 - \$499**

Jill and Ken Abrahams
Peter and Elizabeth Abrahams
Alice Abrams
John Accardi & Sons, Inc
Ernest Aiguier
Alliance Glass Corp.
April Andrew
Anonymous (2)
Patrick Anzalone
Francis Arcaro
Olga Arnold
Stephen C. Ashness
Wanda Atkins
Joanne Auguste
Marcia Aulenback
Automated Food Service
B&M Automotive Service & Repair
Gouri Banerjee
Dante Bantel
Richard Barth
The Honorable Carlo Basile
Donald P. Bautz
Candyce Baxter
Bay Colony Construction
The Beal Companies,LLP
Aixa Beauchamp and Thomas Melendez
Bedrock Leasing
Juan Berrios
Rebecca Bleeker
Virginia Boermeester
Bond Brothers Inc.
Boston Philharmonic Orchestra Corp.
Boston Police Department
Benevolent Society
Boulevard Cafe
Boy Scout Troop 114, Bedford MA
Boyd & Turner LLC
Arnold Bressler and Monica Jacobson
K. Douglas Briggs and Claudia L. Sorgi
Broderick Bancroft and Goldberg
Derek and Koren Brodin
Christopher Brown and
Jocelyn Chertoff
David Brown
Kenneth M. Bryan
Lisa Butler
Cambridge Biomedical, Inc.
Paula Caputo

Debra Casey
Peter A. Cassani
Jennifer Cefalo
Linda Champion
Jacob Chartoff
Sophea Chau
Douglas A. Chisholm
Ingrid Christiansen
Olive Chukwuana
Lawrence Clifford
C-Mart Supermarkets
James Connors
Diane Consalvo
Constellation Maritime Company
Copley Motorcars Corporation
Coverall North America, Inc.
Robert Crabtree
Cranney Companies Inc.
June T. Crow and Joseph Tringale
Cuddy Brothers
Robert and Jane Cummings
Michael and Nancy Curtin
Curtis Guild School Fund
D & P Swimming Pool Construction Inc
Stephen and Paula S. Dangel
Dana Daniel
Michael D'Avolio
Guy DeAngelis
Delta Airlines, Inc.
Noreen Dillon
Salvatore and Maria Distefano
Grace Doherty
Kathy Donnelly
Philip and Mary Ellen Dooher
Anthony and Janie Dowling
Barbara Duff
East Boston Harborside
Community School
East Boston High School
East Boston Main Streets
East Boston Neighborhood
Health Center
East Boston Savings Bank
East Boston Task Force
Lara and Tim Eberline
Ricardo Elien
Ener-G Media Communications
F.M. Fire Control Company, Inc.
Juli Fahey
Christopher Falbo
Gerald Fanfan
Laurel Farnsworth
Annetty Feliz
Kelly A. Fernandes
Megan Fichter
Field Family
Kenneth Fields
Peter E. Finn
Robert A. and Glenda Fishman
Paula M. Fleming

Rhonda Fogle and Alexander Asch	Jeanette Lamberti	Linda M. Ozier
Christine Ford	Latham, Latham & Lamond, PC	George and Linda Pacheco
Amy K. Franz and Christopher J. Masalsky	Law Offices of Donald E. Green, P.C.	Julie Peabody
Robert B. Fraser	David Leonard	Steven Pearl
Robert and Julie Frattaroli	Vivian Leonard	Donald Pearson and Lynn Champion
Friends of Boston Latin School Soccer	Lindsey Lerit	Perry's Gourmet Catering
Mathieu Gagne	Felicia Liban	The Honorable Anthony Petruccelli
Diana Ganz	Frank and Jennie Lipari	Anthony Petruccelli Committee
Sarah Gibbons	Lockes Hill Marine, Inc.	Kenneth Pickard
Charles W. Gibson	Shaddiff Lopez	Preferred Meal Systems
Globe Direct	Robert E. Lowell	Prism Financial Group
Paul and Ann Glora	Thomas Lupone	Project Bread
Harriett Goodman	Damon and Christine Lusk	Michelle B. Quinlan
Mark Grant	Jim Lux	Daniel and Tali Rausch
Charles Gray	Law Offices of Richard C. Lynds	The Real Deal
Donald E. Green	M.P. & Co. Tax and Financial Services, Inc.	Thomas Regan
Robert and Mary Green	Stephen C. Mabee and Linda C. Todaro	Thomas E. Reilly and Elizabeth A. Palmer
Andrew Grimes	Bruce Macomber	Re-Max Real Estate Center
Gym Services, Inc.	Karen Mael	James C. Robinson
Peter Halberstadt	C. Mah	Janet Rossi
Dr. John S. and Nancy Hammond	Harry and Catherine Mah	Rotary Club of Wolfeboro
James Haney	Harry Mairson	Steven and Sharon Roussel
John and Siobhan Hanley	Sharon J. Malone	Ruggiero-Mazzarella Memorial Home
Eve Harris	Tom and Wendi Malone	Sandra Ruiz and Larelle Bryson
Marvin C. Harris	Richard Maloney	Kristin Salada
James F. Harvey	Michael Marchese	Valerie A. Sarkis
David Hasenfus	Kenneth P. Marcou	Dr. Paul Satwicz and Nancy Satwicz
Howard and Laura Hecht	Michael Martini	The Savings Bank
Olivia Hecht	Mass Pike Towers	Stephen Saxenian and Stacey Lennard
James A. Heffernan	Robert and Angela Mauceri	Thomas F. Scalley Sons, Inc.
The Hidden Pond Foundation	Henry S. Maxfield Real Estate, Inc.	Helen Chin Schlichte
Margaret Higham	Salvatore Mazzotta	Mark and Janet Schreiner
Michael and Nancy Hinds	Connall McCabe	Donna Severino
Deborah Ho	Scott McCue	Emily J. Shamieh
Gilbert Ho	Danielle McFarlane-Johnson	Shamrock Landscaping
Melissa Hubbard	Francis and Marian McGovern	George and Isabel Shattuck
Mason and Ann Irving	Rosalie McKenzie	Colleen M. Sheehy
Italia Unita Inc.	Paul and Margaret McMahon	Jaclyn Shelton-Wallace
Amarri Jackson	Ian McWilliams	Andrew Sideman
Allison James	Meadow Pond Animal Hospital	Lydia M. Silvestro
James C. Caniff, Jr. Monument Corp.	William F. Meagher, Jr.	Brian Simmons
James Devaney Fuel Company	The Menino Committee	The Banker Family
James Otis Home & School	Mercantile Bank & Trust Company	Sir Speedy
Jeanne Jaroszewski	Mirror Lake Community Church	Charles Skeelee
Brian Keddy	Vivian Montuori	John and Catherine Skinner
Maureen Keene	Gretchen Moy	Ted Smith
Heather Kineavy	William Moy	William Smith
Gail Klimas	John Muller	Dana Snyder
Florence Koplou	Mark and Christine Mulvey	Jerry and Nancy Socol
Kowloon Cafe, Inc.	Karen Murray	Karen Sorensen
Kip Kransdorf and Kathryn Phillipson	David Murray-McCarthy	Abbie Spicer
Michael Krieger	Pauline Natale	Nathan Raymond and Laurie Spindler
Klaus Kubierschky	NES Group Inc.	Spinelli Ravioli MFG Co., Inc.
Louise Kuhlman	Michael J. Nogelo	Christopher Sprague
Laborers INTL Union of North America	Robert I. Nordstrand	Stanton Insurance Agency, Inc.
Richard W. Laham	Brooke and James O'Connor	Clara Stanzin
Joseph and Joyce Lally	Nancy Okstein	Bente Starble
Kathleen Lally	Jillian O'Neil	Richard Steenbruggen
The Honorable Salvatore LaMattina	Thomas B. O'Rourke	Jerry Rubin and Carol R. Steinberg
and Lisa LaMattina	Otis Elementary School	Roberta and Don Steiner

Barbara A. Stone
Kathleen Sullivan
Superior Cleaning Service
Stephen Sutliff
Jason Sutton
Sydney Sheetmetal, Inc.
Tai Tung Pharmacy, Inc.
Kenneth Tarr
Sandra Tassinari
David Tavares
Winston Telesford
Steve Telesmanick
Karen Tenney
Lauren M. Thomas
John Thorndike
David and Lisa Todaro and Family
Todisco Towing
Anna Tourkakis
Laurence Tropeano
Tufts Department of Medicine
John Turner
U.S. Fire Services
Umana Barnes Middle School
Marjorie Van Dercook
Piet and Connie Vanogtrop
Patricia Vellante
Scott Viselli
David Vittorini

Waltham West Suburban Chamber
of Commerce
Robert Wanek
Ann Wardlow
Maria and Samuel Wardwell
Katherine Waters-Clark
Douglass and Elaine Webb
Jennifer A. Weber and Arlton Figuerido
Weeks & Devonish Insurance Agency
Kenneth R. Weiland
Martha Weinberg
WGBH Educational Foundation
Daniel J. Whalen
WHDH-TV/7
Wheaton Electrical Service Inc.
Ernest Williams
Winchester Hospital
Wolfeboro Oil
Clifford Wong
Janice and Robert Woodman
Brooke Woodson
Worcester County Deputy
Sheriff's Office
Peter R. Wright and Lisa M. Gill
David Yamins
Zen International

2010 YMCA ACHIEVERS GALA

Funds raised from the Gala support the YMCA Achievers' college preparation and leadership programs for youth. Thank you to the 2010 gala sponsors listed below.

BENEFACTOR

Partners HealthCare System, Inc.

PATRON

Liberty Mutual Group

PARTNERS

State Street Corporation
The TJX Companies, Inc.
Tufts Health Plan

SPONSORS

The Bank of New York Mellon Corporation
Beth Israel Deaconess Medical Center
Blue Cross Blue Shield of Massachusetts
Boston Medical Center
Children's Hospital Boston
Citizens Bank
Dana-Farber Inc.
Federal Reserve Bank of Boston
Harvard Pilgrim Health Care
Harvard Vanguard Medical Association
John Hancock Financial Services
Massachusetts Eye and Ear Infirmary
Massachusetts Institute of Technology
MBTA
NSTAR
Roxbury Technology Corp.

SUPPORTERS

HealthNet
Ernst & Young
Deborah Felix
Harvard University
Leonard Hayes
Rosa Nichols
The Stuart Family
Westnet, Inc.

HELLO PARTY

The YMCA of Greater Boston would like to thank the following donors to the 2010 Hello Party. Funds raised through the Hello Party help the YMCA offer high quality youth programs.

GOLD SPONSOR

Citizens Bank

SILVER SPONSORS

Bank of America
Brigham and Women's Hospital
Quality of Life Fund
Eileen and Jack Connors
Lynch Family Foundation
Partners HealthCare System, Inc.
State Street Corporation

BRONZE SPONSORS

Converse
Deloitte
Eastern Bank Charitable Foundation
Hill Holiday
Brian and Susan Kavoogian
Kessler Family Foundation
Seth A. and Beth S. Klarman
Stacey and Larry Lucchino
McKinsey & Company, Inc.
NSTAR
Red & Blue Foundation
The Stop & Shop Supermarket Company

PATRON SPONSORS

Arbella Insurance Group
Charitable Foundation
Patricia S. Bellinger and Richard Balzer
Cooley Manion Jones LLP
John and Mary Fowler
Dick and Nancy Friedman
Chad and Anne Gifford
John Hancock Financial Services
John W. Henry Family Foundation, Inc.
KPMG LLP
Holly McGrath and David Bruce
Liberty Mutual Group
Ron Logue and Kathleen McGillicuddy
Mintz Levin
Charles and Hilda Parrott
The Red Sox Foundation
Thomas and Katherine Ryan
Cynthia Strauss and Harry Sherr
Frederick A. Wang/The Wang Foundation
Werner Family Foundation
Willis
Winn Family Charitable Foundation, Inc.

SUPPORTERS

Richard and Nichole Aldrich
Big Night Entertainment Group, Inc.
Bluestone Realty LLC
The Boston Foundation
William Boynton
The Brennan Group, Inc.
Keith Brown
Calloway Laboratories Inc.
Carole Charnow
Brenda Chartoff
Coakley for Senate
Larry and Roberta Cohn
John G. Conley
Michael Contompasis
Jeff and Shannan Conway
Ronald R. and Holly Darzen
David Fialkow
Gail Gall
Keith Gelb
Grayson Family Foundation
Pat Jones
Drs. William and Carolyn Kaelin
Edward Kane
Amanda Kennedy
Mike Kerrigan
Antonia Makosky
Daniel McLaughlin
William and Linda McQuillan
ML Strategies, LLC
Julie Mowschenson
Gil Noam
Northeastern University
Robert P. Sacco
Shaevel & Krems
James and Barbara Skeffington
Frank Strauer
Antonio Teixeira
Westley Thompson
David P. Waller
Faith S. Weiner



OUR YMCAS



City of Boston

CONSTITUTION INN YMCA – 617-241-8400
150 Third Avenue, Charlestown Navy Yard
Charlestown, MA 02129
Steve Telesmanick, Executive Director

DORCHESTER YMCA – 617-436-7750
776 Washington Street, Dorchester, MA 02124
Kathy Townsend, Executive Director

EAST BOSTON YMCA
617-569-9622
215 Bremen Street, East Boston, MA 02128
617-418-7331
54 Ashley Street, East Boston, MA 02128
Joey Cuzzi, Executive Director

HUNTINGTON AVENUE YMCA – 617-536-7800
316 Huntington Avenue, Boston, MA 02115
Wendy Zinn, Executive Director

HYDE PARK YMCA – 617-361-2300
1137 River Street, Hyde Park, MA 02136
Donna Sullivan, Executive Director

OAK SQUARE YMCA – 617-782-3535
615 Washington Street, Brighton, MA 02135
Jack Fucci, Executive Director

ROXBURY YMCA – 617-318-1420
285 Martin Luther King Blvd., Roxbury, MA 02119
May Vaughn-Ebanks, Executive Director

Egleston Square Youth Center – 617-522-0946
3134 Washington Street, Roxbury, MA 02119

WANG YMCA OF CHINATOWN – 617-426-2237
8 Oak Street West, Boston, MA 02116
Karen Gately, Executive Director

WEST ROXBURY YMCA
617-323-3200
15 Bellevue Street, West Roxbury, MA 02132
617-323-5111
1980 Centre Street, West Roxbury, MA 02132
Marion Kelly, Executive Director

Neighboring Communities

BURBANK YMCA – 781-944-9622
36 Arthur B. Lord Drive, Reading, MA 01867
Kathleen Walsh, Executive Director

CHARLES RIVER YMCA
Pool Site – 781-444-6400
863 Great Plain Avenue, Needham, MA 02492
Active Family Center – 781-449-6646
380 Chestnut Street, Needham, MA 02492
Kathryn Lozano, Executive Director

NORTH SUBURBAN YMCA – 781-935-3270
137 Lexington Street, Woburn, MA 01801
Amy Turner, Executive Director

WALTHAM YMCA – 781-894-5295
725 Lexington Street, Waltham, MA 02452
Patricia Barnwell, Executive Director

Signature Programs

YMCA ACHIEVERS – 617-536-7800
316 Huntington Avenue, Boston, MA 02115
Willie Shellman, Executive Director

YMCA CAMPING SERVICES – 603-569-2725
PO Box 10, Mirror Lake, NH 03853
Artie Lang, Executive Director

YMCA TRAINING, INC. – 617-542-1800
18 Tremont Street, Boston, MA 02108
Elsa Bengel, Executive Director
Anne Meyerson, Director

YMCA INTERNATIONAL LEARNING CENTER
617-927-8244
316 Huntington Avenue, Boston, MA 02115
Elsa Bengel, Executive Director
Susan Arida, Director